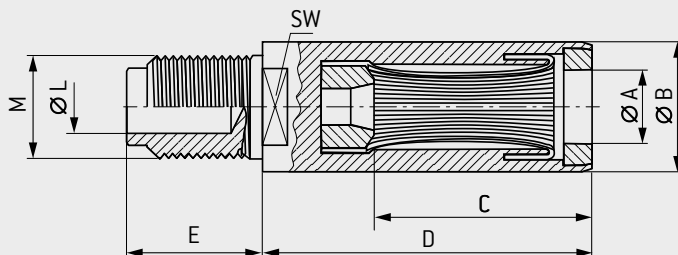


ODU SPRINGTAC® SOCKET



Contact with springwire technology

SOLDER/SCREW TERMINATION



Part number	Dimensions								Mechanical data ¹		Electrical data ¹			
	Ø A	Ø B	C	D	SW	E	M	Ø L	Mating force	Demating force	Nominal current	Max. continuous current	Surge current	Contact resistance
	mm	mm	mm	mm	mm	mm	Thread	mm	N	N	A	A	kA	µΩ
170.106.100.201.000	1.5	4	12	15.5	–	12.5	M2.6	1.25	5	3	25	35	1.5	500
170.107.100.201.000	2	4	12	15.5	–	12.5	M3	1.8	6	4	30	40	2.5	400
170.109.100.201.000	2.5	6	12	15.5	5	12.5	M3	1.8	8	5	30	45	3	300
170.110.100.201.000	3	7	15	22.5	5	15	M4	2.3	10	7	35	50	4	250
170.111.100.201.000	4	8	15	22.5	6	19	M5	3	15	10	55	80	7	210
170.112.100.201.000	5	9	15	22.5	7	19	M5	3	18	12	85	110	10	200
170.113.100.201.000	6	11	24	33.5	8	22	M6	3.6	20	13	95	140	13	180
170.115.100.201.000	8	14	24	33.5	11	26	M8	4.8	25	15	140	210	18	160
170.117.100.201.000	10	16	24	33.5	12	30	M10	6.2	30	20	175	275	25	150
170.119.100.201.000	12	18	36	47	14	34	M12 × 1.5	7.6	35	25	230	340	34	140
170.121.100.201.000	16	23	36	47	19	42	M16 × 1.5	11.5	45	35	340	460	50	130
170.123.100.201.000	20	27	48	66	22	50	M20 × 2	14.5	55	45	450	600	70	115
170.125.100.201.000	24	32	48	66	27	58	M24 × 2	17.8	70	55	500	700	90	105
170.127.100.201.000	28	36	48	66	32	62	M32 × 2	25	90	65	650	850	110	90
170.128.100.201.000	30	38	48	66	32	62	M32 × 2	25	100	70	720	950	120	80

Other variants, sizes and finishes available on request.

¹ See "Technical Information" starting on page 55.

TECHNICAL DATA

- Suitable for contact pins (page 27 and 28)
- Suitable for screwing to power busbars, backplanes and contact blocks
- Cables with lugs can be easily connected
- Cables can be soldered into the solder hole