

Datasheet | EA01

EP-402 Series



General Purpose AC EMI Filter

Approvals /Conformance



Technical specifications

Operating voltage	120/250 VAC
Current rating	1A-10A
Frequency	50/60Hz
Voltage drop	1 Volt max.
High potential test voltage	P -> E 1500VAC P -> N 1414VDC (Applicable for general purpose filter)
Insulation resistance	≥ 300 MΩ @ 500VDC (PN→E)
Operating temperature	40°C /-25°C +85°C

*Image shown is for illustrative purpose only

Features and benefit:

- | All filters provide high attenuation performance.
- | All filters compliance to EN60939-3:2015 & EN60939- 2:2005 standards.
- | Compact PCB-mountable design.
- | High reliable.
- | Plastic housing with good aesthetic.
- | Single stage.
- | Input and output connection through soldering pins.
- | Filters available in medical version without capacitor to earth.
- | With surge suppressor filters also available.
- | Cost effective solution.

Attenuation Type:

Single Stage

Standard

Application:

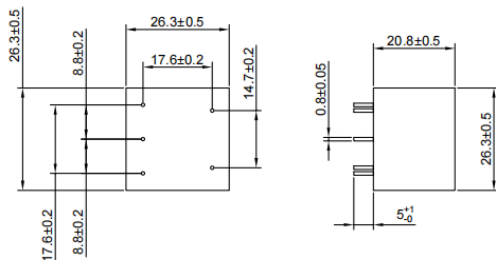
- | Electrical and electronic equipment
- | Consumer product
- | Medical equipment
- | SMPS
- | Test & measurement equipment
- | Small to medium-sized machines and household equipment
- | Office automation equipment

Datasheet | EA01

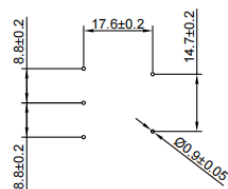
EP-402 Series



Electrical schematic for Filter



PCB DRILLING DETAILS

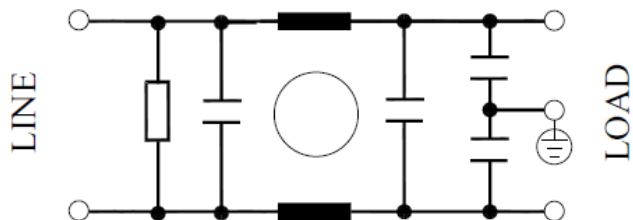


*All dimensions are in mm.

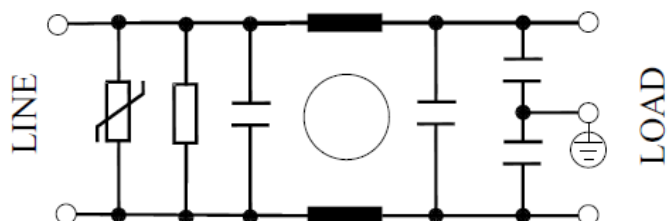
Note: For medical application filter, earthing terminal is not provided.

Electrical schematic for Filter

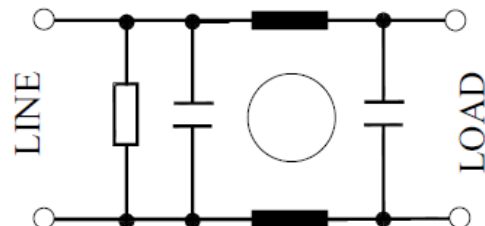
General purpose -



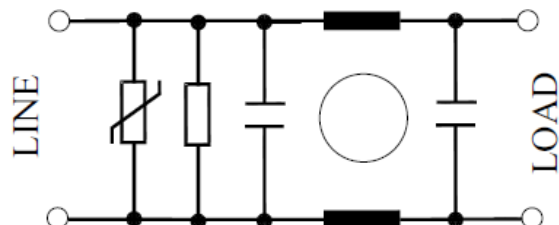
General purpose with surge suppressor -



Medical equipment application -



Medical equipment application with surge suppressor -



Datasheet | EA01

EP-402 Series



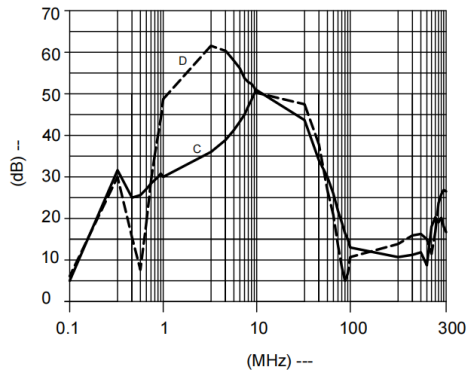
Filter attenuation Graph

C = Common mode (asymmetrical) -----

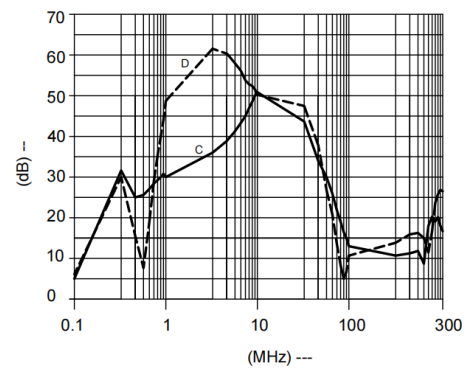
D = Differential mode (symmetrical) -----

For General application (Single Stage)

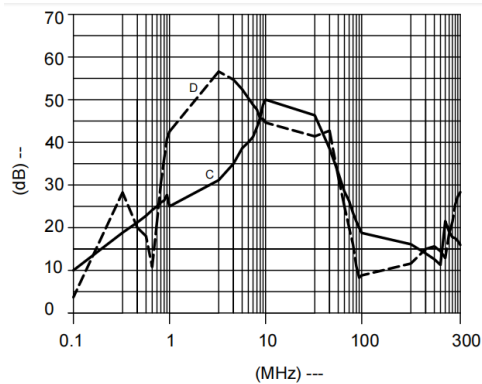
For 1A



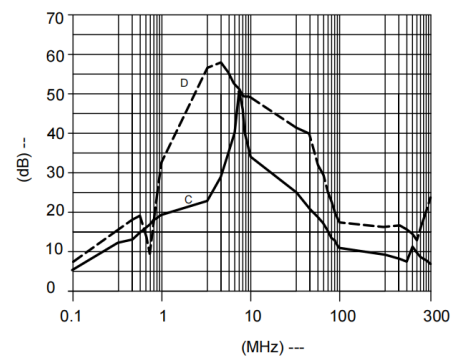
For 3A




For 6A



For 10A



Filter Selection Table –

Sr. No.	Elcom part codes (ordering code)	Rated Current rating (A) @40°C	Leakage current (mA) @250VAC	Pin-type terminal 	Max. Peak current (8/20 μ sec 1 time) (KA)	Energy surge rating (10/1000 μ sec) (Joules)	Approx. weight (gm)	Attenuation
1	EF-1B001A01E-A01	1	< 0.5	A	----	----	25	Standard
2	EF-1B001A02E-A01	1	< 0.5	A	1.75	42	25	Standard
3	EF-1B001A03E-A01	1	< 0.003	A	----	----	25	Standard
4	EF-1B001A04E-A01	1	< 0.003	A	1.75	42	25	Standard
5	EF-1B003A01E-A01	3	< 0.5	A	----	----	25	Standard

Datasheet | EA01

EP-402 Series



6	EF-1B003A02E-A01	3	< 0.5	A	1.75	42	25	Standard
7	EF-1B003A03E-A01	3	< 0.003	A	----	----	25	Standard
8	EF-1B003A04E-A01	3	< 0.003	A	1.75	42	25	Standard
9	EF-1B006A01E-A01	6	< 0.5	A	----	----	25	Standard
10	EF-1B006A02E-A01	6	< 0.5	A	1.75	42	25	Standard
11	EF-1B006A03E-A01	6	< 0.003	A	----	----	25	Standard
12	EF-1B006A04E-A01	6	< 0.003	A	1.75	42	25	Standard
13	EF-1B010A01E-A01	10	< 0.5	A	----	----	25	Standard
14	EF-1B010A02E-A01	10	< 0.5	A	1.75	42	25	Standard
15	EF-1B010A03E-A01	10	< 0.003	A	----	----	25	Standard
16	EF-1B010A04E-A01	10	< 0.003	A	1.75	42	25	Standard

- Customize products provided on request.
- Maximum leakage under usual AC operating conditions (acc. IEC 60939-3). Note: if the neutral line is interrupted, worst case leakage could reach twice this level.

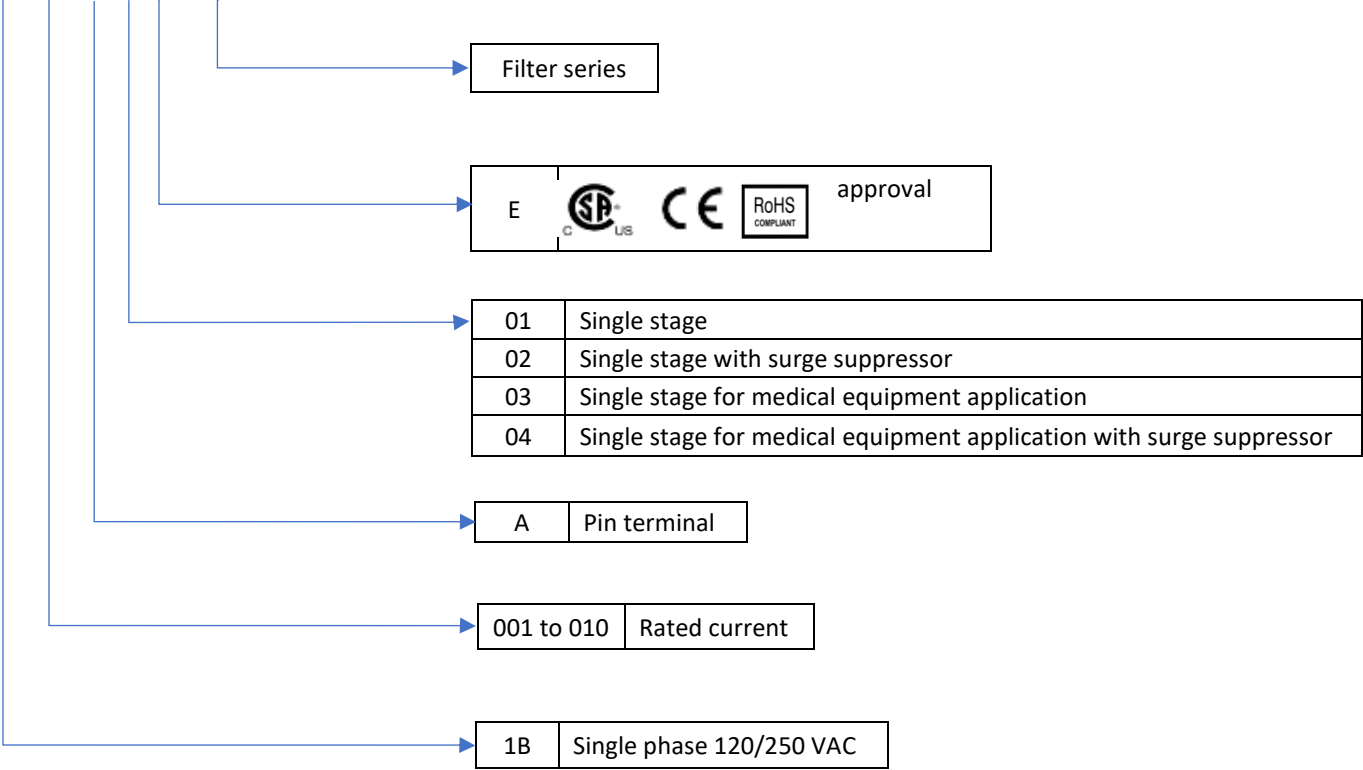
Datasheet | EA01

EP-402 Series



Syntax

EF – 1B CCC A YY E – A01



Datasheet | EA01

EP-402 Series



REV	IS	WAS	DATE	SIGN	APP.

HQ: Elcom International Pvt. Ltd. 20, Prabhadevi Ind. Est., Mumbai - 400 025, India. Tel.: +91 22 66114444, Fax: +91 22 66114422, sales@elcom-in.com

www.elcom-in.com

Prepared on: 01.01.22

F: ENG-40.00

Copyright © 2022 by Elcom International Pvt.Ltd, India. All rights reserved

The content of this document has been carefully checked and understood. However, Elcom not assume any liability whatsoever for any errors or inaccuracies of this document and the consequences thereof. Published specifications are subject to change without notice. Product suitability for any area of application must ultimately be determined by the customer.

Elcom International Pvt Ltd

20, Ground Floor, Prabhadevi Industrial Estate, 408, Veer Savarkar Marg, Prabhadevi, Mumbai, Maharashtra - 400025, India.

Landline - +91-22-66114444 / +91-22-24308861

Email ID: elcom.mail@elcom-in.com

Factory:

Plot E-4, MIDC, Kagal-Hatkanangale Five Star Industrial Area, Kasba:Sangaon, Kolhapur, Maharashtra, India – 416236

Landline - +91-231-6618107

